



ClinDoc

Apollo Clinical Documentation

Clinical Documentation at the Point of Care

ClinDoc replaces your hemodynamic procedure log, allowing you to:

- Create a complete procedure log in Apollo quickly and easily by using customizable picklists, automated time and date stamps, and editable fields that auto-populate discrete Apollo data fields
- Ease ACC 4.0 Registry participation by collecting precise data at the point of care, ensuring smooth data harvest and submission
- Cut costs by supporting real-time electronic reporting at your heart center, and extending the life of your existing hemodynamic systems

With ClinDoc, creating procedure logs or nurses' notes is easy—simply select pre-defined notes from one or more templates, similar to how you use Apollo's picklist feature. The pre-set notes can be customized, so you can collect exactly the information that your facility needs for each procedure in each department. Notes can be set to auto-populate fields in Apollo, allowing you to add, verify, and update information in the database. ClinDoc is available for the cath lab (ACC 4.0 compliant), EP, and echo.

Replaces Your Hemodynamic Procedure Log

By using ClinDoc rather than your hemodynamic system, you achieve substantial benefits for your heart center: streamlining workflow, easing registry participation, standardizing data collection, and broadening data analysis capabilities. Just look at the advantages using ClinDoc has over using hemodynamic systems for procedure logs:

Customizable: Like Apollo, ClinDoc is customizable. You can use standard templates to create your own picklists, which can collect procedure data, equipment usage, and much more. In addition, these picklist options can be changed at any time to meet the changing needs of your heart center or changing registry requirements.

ACC 4.0 Compliant: The ability to customize ClinDoc is even more important with the new requirements generated by ACC 4.0. If the ACC decides during the course of the year to change field requirements, then ClinDoc can be updated to collect the new information.

How ACC-NCDR® 4.0 Participants Benefit from ClinDoc:

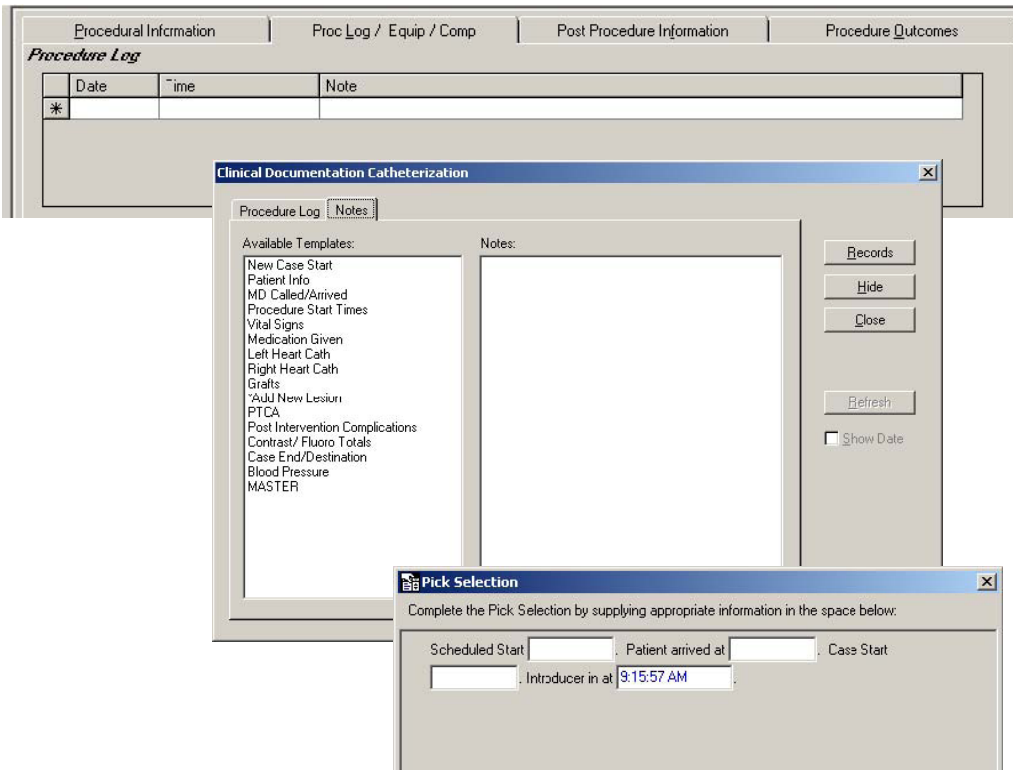
- Precise data collection fulfills ACC 4.0 field requirements
- Eliminate conflicts between data collected in the hemodynamic system versus data required for ACC
- End duplicate data entry
- Adjust to any changes the ACC may request throughout the year

ClinDoc collects precise data in fields compatible with ACC 4.0. This compatibility ensures smooth data harvest and submission to the ACC. With many of the hemodynamic systems on the market today, this data is not collected to ACC specifications, so heart centers must go back and reenter data or resolve discrepancies. This takes staff time and introduces data entry errors.

Easy to Use: Hemodynamic systems can be cumbersome and awkward to use when entering data. By entering data directly into Apollo, you can work with a familiar interface. Picklists and an automated date and time stamp make data entry quick and painless.

Cut Costs: With ClinDoc heart centers can use their existing hemodynamic systems for many years without having to upgrade. By entering the procedure log data directly into Apollo, heart centers do not need to spend money upgrading to a hemodynamic system with a better user interface. This results in substantial long-term savings to heart centers.

Eliminate Dictation, Support Real-Time Patient Reports: When heart centers enter data into the hemodynamic system, they must wait for the procedure to be completed with the patient off the table, before the hemodynamic data is packaged and interfaced to Apollo. This can create a 15 to 30 minute delay, by which time the physician may already be seeing other patients, returning to the office, or done for the day. So the physician typically ends up calling in and transcribing the final patient report. In contrast, with ClinDoc the hemodynamic data is available in real time, so when the physician is done with the patient, he or she can sit down at the computer right away and complete the final patient report before the patient is off the table. By completing the report and signing off immediately the doctor doesn't need to dictate, resulting in substantial cost savings for the heart center.



ClinDoc automates the creation of a procedure log.

Notes populate the log as well as read and write to discrete Apollo fields.

Lesions can be described in the procedure log, which will create a lesion record in Apollo. ClinDoc notes are created by the user in Apollo's Field Editor Tool. Most modules come with a set of default notes that the site can edit and add to.

